

DeskArtes 3Data Expert 16.0

Network license setup

Client settings



Contents

About this document.....	2
Requirements.....	2
Terminology.....	3
Network license client configuration in 3Data Expert.....	4

About this document

This document explains the client license settings needed to configure the DeskArtes 3Data Expert program to use the Reprise License Manager (RLM) network license system, instead of the default DeskArtes standalone licenses.

Before changing the client license settings, you need to have a license server running in one of the machines in your network.

For the instructions for installing the license server, see the document "[Network license setup: Server installation](#)".

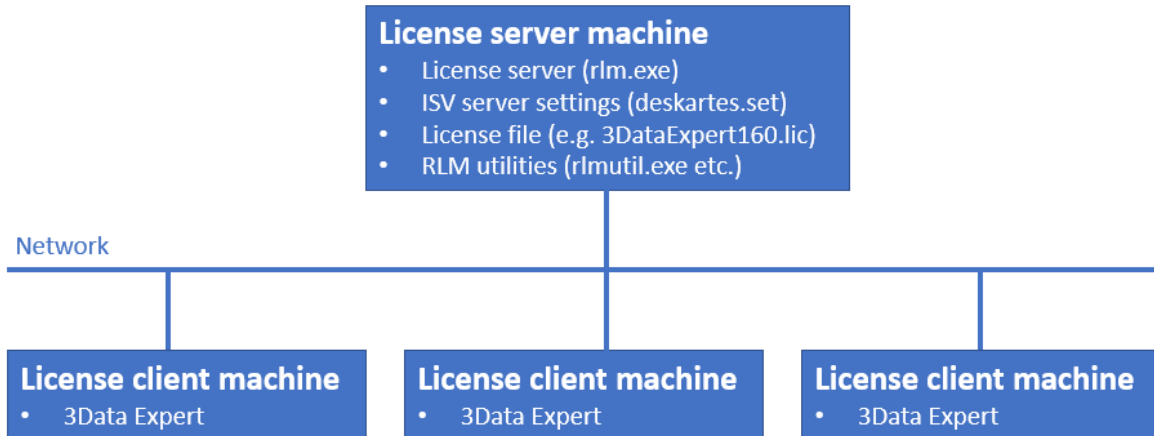
The instructions in this document are written for the DeskArtes 3Data Expert version 16.0 installation package, containing Reprise RLM version 14.2 BL5 license server and tools.

Requirements

The machines running the DeskArtes 3Data Expert program with the Reprise RLM network license system, must be connected to the machine running the license server with a network using the TCP/IP protocol.

Terminology

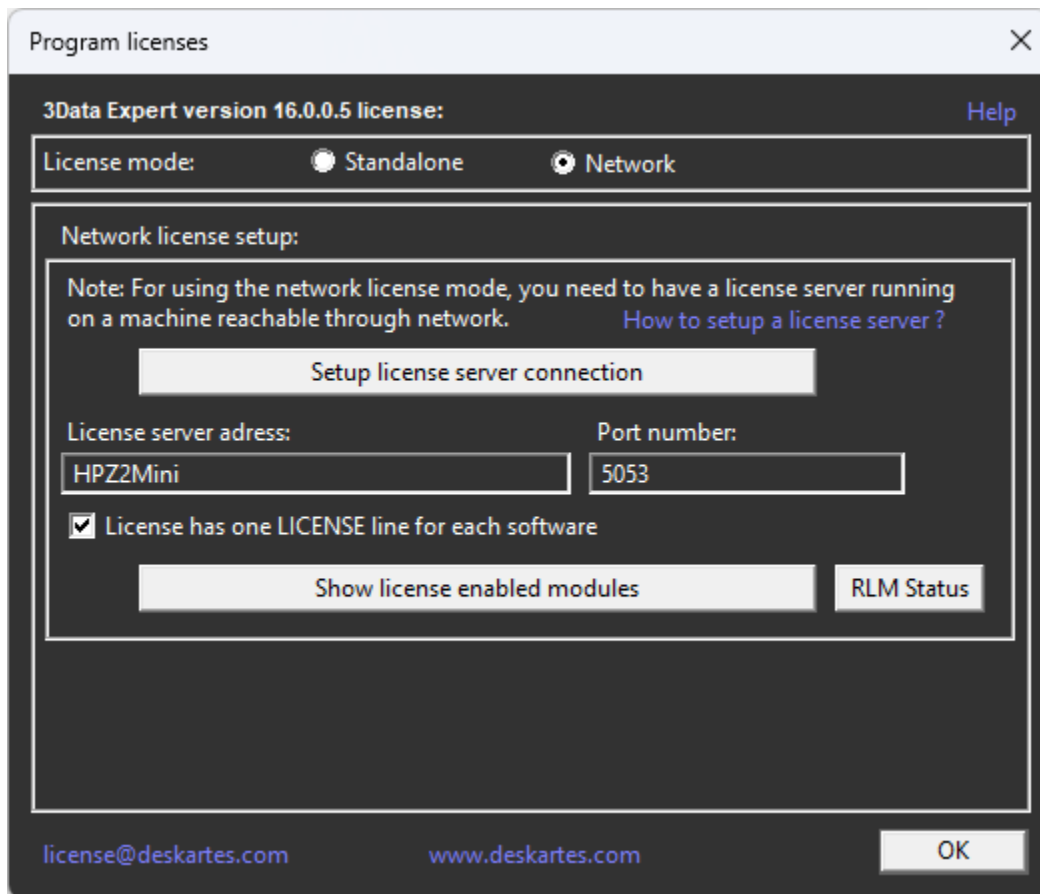
The Reprise RLM network license system, configured for DeskArtes 3Data Expert, consists of the parts illustrated in the following figure.



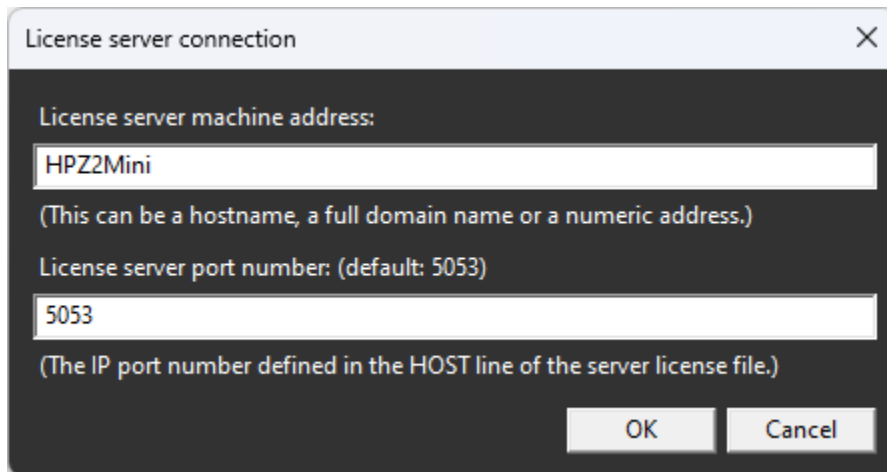
License server machine	The machine where the license server is running.
License client machine	A machine where DeskArtes 3Data Expert is running.
License server program	The program (rlm.exe) controlling the license usage in the network, with help of the ISV server.
ISV server settings file	A platform independent settings file for an ISV server (deskartes.set for DeskArtes programs, like 3Data Expert).
License file	A text file containing the list of available licenses and ISV servers.
RLM utilities	A set of small command line utility programs for handling the license server (rlmutil.exe, rlmhostid.exe, rlmstat.exe, rlmdown.exe, etc.).

Network license client configuration in 3Data Expert

The license system settings can be changed in 3Data Expert by selecting the "Help->Licenses..." command.



To set the software to use a network license select the "**Network**" license type and press the "**Setup license server connection**" button.



In the License server connection window fill in the "License server machine address" and "License server port number" fields.

License server machine address is a network address for the machine where the license server program is running. It can be a simple hostname, a full domain name or a numeric address (for example: licserver, licserver.somedomain.com or 192.168.0.105)

License server port number is the IP port number used by the license server to listen to license requests from client machines. The port number is defined in the HOST line of the license file. The default port number is 5053.

The correct port number and the hostname can be checked from the HOST line of the license file (**second** and **fourth** field).

```
HOST HPZ2Mini c85acf785a53 5053
ISV deskartes deskartes
LICENSE deskartes 3data_expert 16.0 31-dec-2026 1
options=0257d4804000c00 _ck=03d681fb2e sig="60PG4580PWR9YMBJFSAUNR
5UE5F52NARNG5Q6VE308A63YNA9ECUTH6REXJH7FDBP6W77AQNUG"
```

or in the license server startup messages (lines: "**License server started on ...**" and "**Using TCP/IP port ...**").

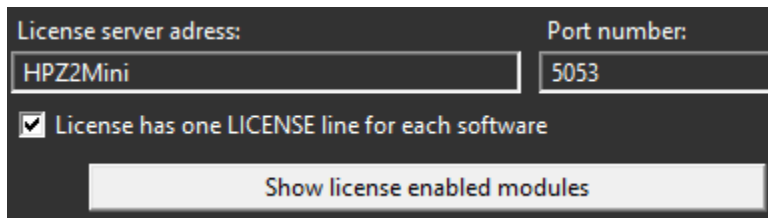
```
C:\Reprise>.\rlm.exe
04/29 08:18 (rlm) RLM License Server Version 14.2BL5

      Copyright (C) 2006-2021, Reprise Software, Inc. All rights reserved.

04/29 08:18 (rlm) License server started on HPZ2Mini
04/29 08:18 (rlm) Server architecture: x64_w4
04/29 08:18 (rlm) License files:
04/29 08:18 (rlm)      3DataExpert160.lic
04/29 08:18 (rlm)
04/29 08:18 (rlm) Web server starting on port 5054
04/29 08:18 (rlm) Using TCP/IP port 5053
04/29 08:18 (rlm) ... adding UDP/IP port 5053
04/29 08:18 (rlm) Starting ISV server deskartes on port 62365
04/29 08:18 (rlm) New thread created to watch ISV deskartes
```

When the correct information has been filled in, press "OK" in "License server connection" window.

In the "Program licenses" window check that the "License has one LICENSE line for each software" setting is ON.



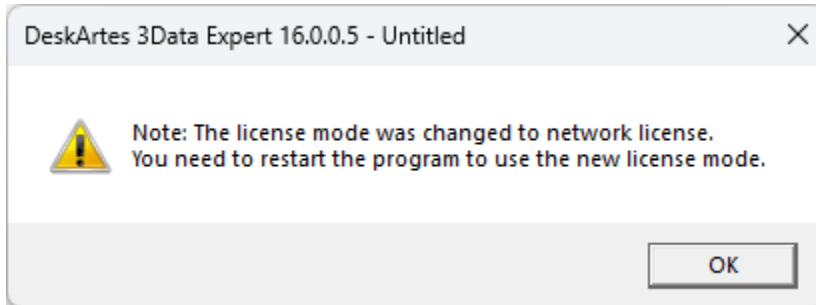
In version 16.0, DeskArtes 3Data Expert uses as default the network license files, where each software has only one LICENSE line.

```
HOST HPZ2Mini c85acf785a53 5053
ISV deskartes deskartes
LICENSE deskartes 3data_expert 16.0 31-dec-2026 1
options=0257d4804000c00 _ck=03d681fb2e sig="60PG4580PWR9YMBJFSAUNR
SUE5F52NARNG5Q6VE308A63YNA9ECUTH6REXJH7FDBP6W77AQNUG"
```

If you know that you have installed on the license server an old type of license file, where each software module has its own LICENSE line, then turn the "License has one LICENSE line for each software" setting OFF.

```
HOST HPZ2Mini c85acf785a53 5053
ISV deskartes deskartes
LICENSE deskartes 3de_clitool 16.0 31-dec-2026 1 _ck=90d6fc7b65 sig="6
0P045157DH7G5A9U3SQ98MQR5QEY7E1G0T9QC822HSH0AH5SD18CKQ52QJ87CG7KURY
NY5YPR"
LICENSE deskartes 3de_stlcut 16.0 31-dec-2026 1 _ck=39d6fcc365 sig="60
P0450Y7DT1YMEMH8BA2JWVBV5QKAN4J1UJEM022HN4K214WRHEY3X04GF29GHCHAM6P
G616G"
LICENSE deskartes 3de_stlredu 16.0 31-dec-2026 1 _ck=9dd6fc466a sig="6
0P0453H0RQGE11ADJTV86UQ19VHKHDETHM1A6G22H3E6JEC31CTQ8VEP9U0UAQ6FF05
S2F754"
LICENSE deskartes 3de_tr2slice 16.0 31-dec-2026 1 _ck=c2d6fc3a8c sig="
60P0452PQC6KUGRA54KHXX811CJSVTTGG46PUY022G45WVS0MJW0EKDPWFPK0AJCYDQ
5BP9KYM"
```

After the right setting has been selected, press "OK" in "Program licenses" window.



Then the program reminds you to restart the program. Exit the 3Data Expert and start it again.

In the startup the software will request a license from the license server.